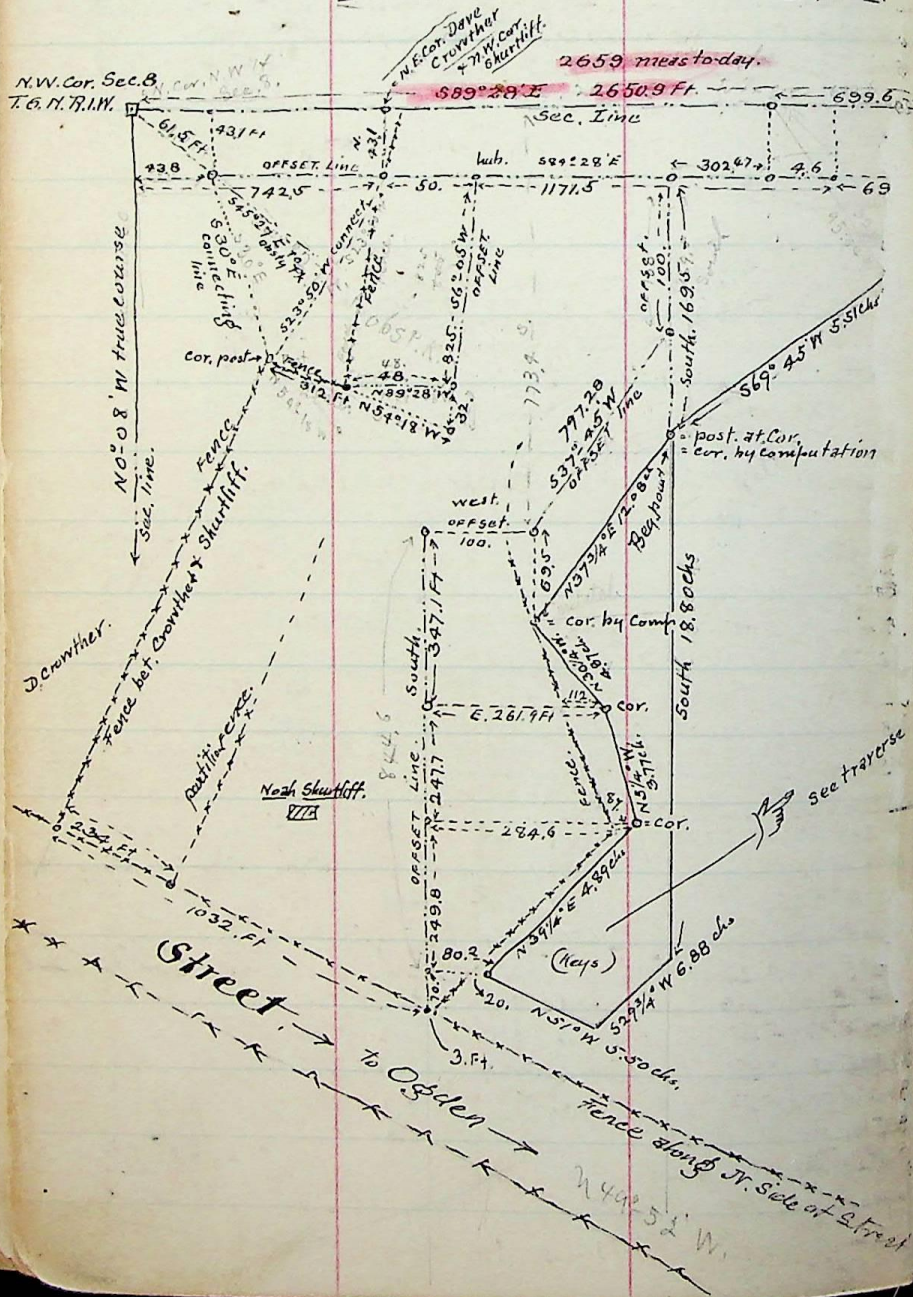


# Harrisville

January 1-1898.

Notes of

Survey for Noah Shurtliff Estate.  
 In N.W. 1/4 Sec. 8, T. 6. N. R. 1. W. Very Cold day



79

Traverse of the Keys tract of Land in N.W. 1/4 Sec. 8 - T. 6. N. R. 1. W.  
 Recorded in book M, of deeds page 567, and beg. at a point 10.60 chs  
 W. and 1.44 chs. S. 24° E. from the N.E. cor. of said 1/4 Sec.  
 See also opp. folio

COURSE	Dist	Lat N.	Lat S.	Dep. E.	Dep. W.	Remarks.
South	18.80		18.80 chs.			N. end of this course is beg. pt. in deed
S 29 1/4° W.	6.88		5.97 chs.		3.416	
W. 1/4° W.	5.50	3.464			4.278	
1/4° E	4.89	3.789		3.092		
1/4° W.	3.77	3.754			.345	
5/4° W.	4.87	4.206			2.453	
2 3/4° E	12.08	9.55		7.40		to beg. point. last course.
	56.79	24.763	24.772	10.492	10.492	

254 Deeds - Noah Shurtliff to David Cronther - Pt. J. 1/4 Sec. 8, T. 6. N. 1. W.  
 Beg. N.W. Cor. S. 1/4 Sec. - E. 11.25 chs - S. 55 1/4° W. 13.34 chs - N. 55° W. 4.14 chs - S. 24 1/4° W. 4.79 chs  
 N. 50 1/4° W. 6.00 chs. in mid St. N. 11.40 chs to beg.

Traverse table Q-254. Jan. 9-1898 -

Course	Dist.	N-	S-	E-	W-	Remarks.
East	11.25			11.25		First course in deed.
5 1/4° W	13.34		13.288		1.221	
7 5/8° W	4.14	2.37			3.395	
24 1/4° W	4.79		4.37		1.964	S. End of this course is 15.28 chs. and 4.67 chs. E. of beg.
50 1/4° W	6.00	3.84			4.61	
North	11.40	11.40				to beg.
	50.92	17.61	17.655	11.25	11.190	

J. line of this 1/4 is 40.15 chs long

Traverse of the Noah Shurtliff (Homestead) in N.W. 1/4 Sec. 8, T. 6. N. R. 1. W.

Course	Dist.	N-	S-	E-	W-	Remarks.
7st.	18.30					
24° E	1.44			18.30		First Course begs. 11.25 chs E. of N.W. cor. N.W. 1/4 Sec. 8.
S 69 3/4° W	5.51		1.312	.589		
S 37 3/4° W	12.08		1.907		5.168	
S 30 1/4° E	4.87		9.55		7.40	
S 5 1/4° E	3.77		4.206		2.453	
S 39 1/4° W	4.89		3.754		.345	
S 39 1/4° W	.92		3.789			
N 50 1/4° W	15.604	9.943	.712		3.092	S. End of this course is 29.918 chs S. and 6.021 chs E. of beg.
N 24 1/4° E	4.79	4.37			.582	
S 5 1/4° E	4.14				12.026	
N 5 1/4° E	13.34	13.288	2.37		1.964	
	64.5	27.601	27.60	28.267	1.221	to beg. point.